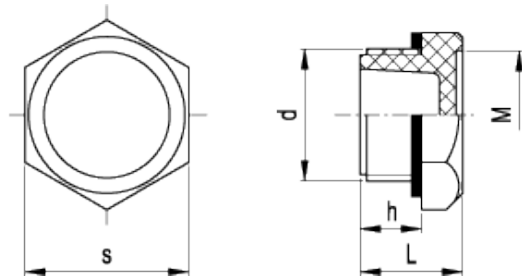


TN.

Plugs



ELESA Original design



technical informations

Material

Glass-fibre reinforced polyamide based (PA) technopolymer. Resistant to solvents, oils, greases and other chemical agents.

Colour

Black, matte finish.

Flat packing ring

NBR synthetic rubber.

Maximum continuous working temperature

100°C.

Accessories on request

TN. plugs are suitable for mounting [MH. aluminium plates with graphic symbols](#).

Technical data

An adequate tightening torque (see table below) is recommended when screwing the plug, so as to guarantee optimal tightness without any deformation of the packing ring. Suggested tightening torque is the result of laboratory tests carried out at ambient

temperature (23°C) with plug, packing ring and reservoir walls perfectly cleaned.

Standard Elements		Main dimensions					Tightening torque	Weight
Code	Description	d	h	s	L	M	[Nm]	g
58284	TN.10x1.5	M10x1.5	9	19	16	15	4÷5	4
58285	TN.12x1.5	M12x1.5	9	19	16	15	6÷8	4
58286	TN.14x1.5	M14x1.5	9	19	16	15	6÷8	5
58287	TN.16x1.5	M16x1.5	9	22	16	17	8÷10	7
58288	TN.18x1.5	M18x1.5	11	26	18	20.5	8÷10	8
58289	TN.20x1.5	M20x1.5	11	26	18	20.5	8÷10	8
58290	TN.22x1.5	M22x1.5	12	32	20	25	10÷12	12
58291	TN.25x1.5	M25x1.5	12	32	20	25	10÷12	12
58292	TN.26x1.5	M26x1.5	12	32	20	25	10÷12	14
58293	TN.35x1.5	M35x1.5	13	38	22	31	15÷18	15
58401	TN.40x1.5	M40x1.5	14	46	24	38	15÷18	20

Standard Elements		Main dimensions					Tightening torque	Weight
Code	Description	d	h	s	L	M	[Nm]	g
58294	TN.1/8	G 1/8	9	19	16	15	4÷6	4
58295	TN.1/4	G 1/4	9	19	16	15	4÷6	4
58296	TN.3/8	G 3/8	9	22	16	17	8÷10	5
58297	TN.1/2	G 1/2	11	26	18	20.5	8÷10	8
58298	TN.3/4	G 3/4	12	32	20	25	10÷12	14
58299	TN.1	G 1	13	38	22	31	12÷15	18
58411	TN.1¼	G1¼	14	46	24	38	15÷18	20
58413	TN.1½	G1½	15	55	26	46	15÷18	24



ELESA and GANTER models all rights reserved in accordance with the law. Always mention the source when reproducing our drawings.

STANDARD MACHINE ELEMENTS WORLDWIDE